

# **GOVERNMENT ENGINEERING COLLEGE**

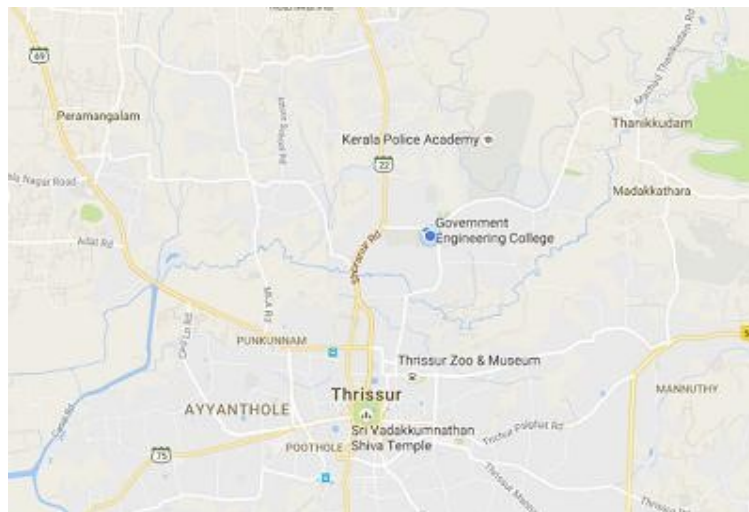
**THRISSUR – 680009**

**PH: 0487 - 2334144. FAX: 0487 2334590 Email: principal@gectcr.ac.in**

## **MANDATORY DISCLOSURE**

1. AICTE File No. : F.No. South-West/1-4261736846/2019/EOA
  2. Date & Period of last approval : 30/04/2019 (Academic year 2019-20)
  3. Name of the Institution : GOVERNMENT ENGINEERING COLLEGE  
THRISSUR
- Address of the Institution : ENGINEERING COLLEGE PO  
RAMAVARMAPURAM
- City & Pin Code : THRISSUR, PINCODE-680009
- State / UT : KERALA
- Longitude & Latitude : 0.5546° N, 76.2247° E

Location of the institution in map



- Phone number with STD code : 0487 2334144
- FAX number with STD code : 0487 2336124
- Office hours at the Institution : 9.00 AM to 4.00 PM from Monday to Saturday
- Academic hours at the Institution : 9.00 AM to 4.00 PM from Monday to Friday
- Email : principal@gectcr.ac.in
- Website : <http://gectcr.ac.in>
- Nearest Railway Station : Thrissur
- Nearest Airport (dist in Km) : Cochin International Airport (56.2kms)

Vision of the Institution :

**To be a Premier Institution of Excellence in Engineering Education and Research for Sustainable Development.**

Mission of the Institution :

- i. Provide Quality Education in Engineering and Technology**
- ii. Foster Passion for Research**
- iii. Transform the Students into Committed Technical Personnel for the Social and Economic Wellbeing of the Nation**

Type of Institution : Government

Category (1) of the Institution

Category (2) of the Institution : Co-Ed

4. Name of the organization running the Institution : Directorate of Technical Education, Govt. of Kerala  
running the Institution

Type of the organization : Government

Address of the organization : Directorate of Technical Education, Trivandrum,  
Kerala

Registered with : NA

Registration Date : NA

Website of the organization : <http://gectcr.ac.in>

5. Name of the affiliating University / Board : APJ Abdul Kalam Technological University &  
University of Kerala

Address : APJ Abdul Kalam Technological University, CET  
Campus, Thiruvananthapuram

Website : [www.ktu.edu.in](http://www.ktu.edu.in), University Of Kerala, Senate

House Campus, Palayam, Thiruvananthapuram – 34

Latest affiliation period 2016-17

6. Name of Principal / Director : Dr. Sheeba V S

Exact Designation : Principal

Phone number with STD code : 0487-2334144

FAX number with STD code : 0487-2334590

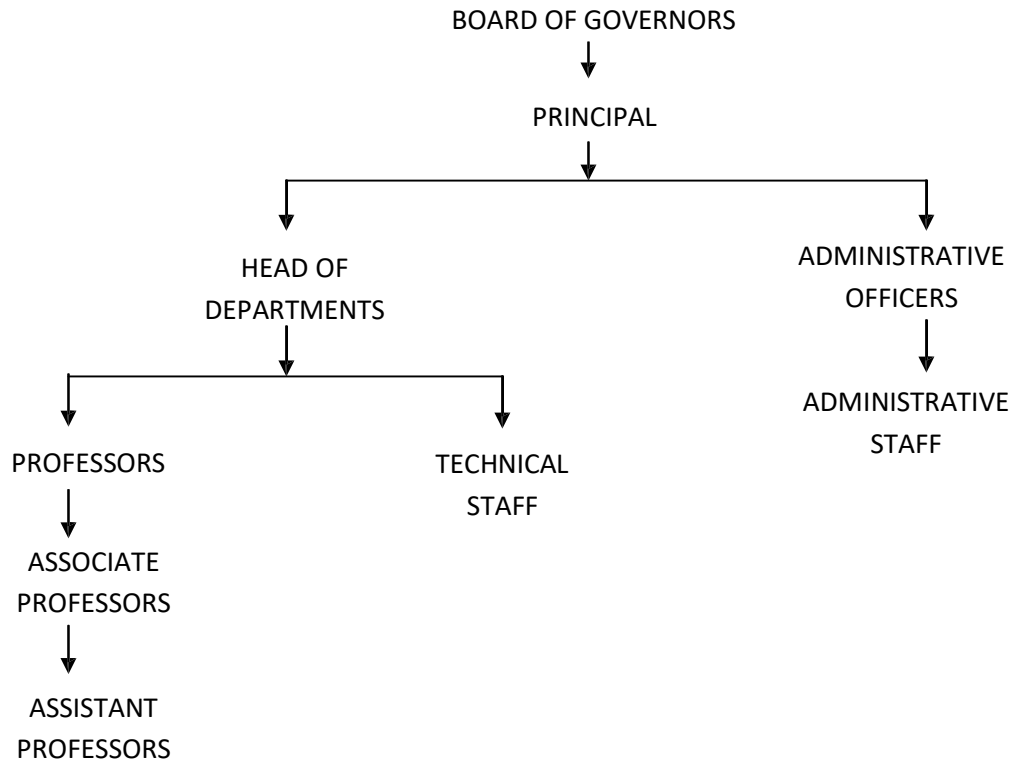
Email : [principal@gectcr.ac.in](mailto:principal@gectcr.ac.in)

Highest Degree : PhD

Governing Body Members

SLNO	NAME AND ADDRESS	POSITION IN BoG
1	Dr. Ligy Philip Professor, IIT Madras	CHAIRMAN
2	Dr. Satish Vasu Kailas Professor, IISC Bangalore	MEMBER
3	Sri. Anil Warriar Vice President, SAP Labs	MEMBER
4	Dr. N. Sajikumar Professor, CE	Institutional Member (Senior Faculty)
5	Dr. M. Nandakumar Professor, EEE	Institutional Member (Senior Faculty)
6	Higher Education Department State Government Nominee	Member (Ex Officio)
7	Government Finance Department State Government Nominee	Member (Ex Officio)
8	Director of Technical Education	Member (Ex Officio)
9	Director SPFU	Member (Ex Officio)
10	University Nominee	Dr. Vrinda V Nair Dean (Research), KTU
11	AICTE Nominee	Dr. Ramesh Unnikrishnan Regional Officer & Director, AICTE-South Western Regional Office (SWRO), Tvpm
12	Principal of Institution	Member Secretary (Ex-Officio)

## ORGANIZATIONAL CHART



Student feedback mechanism on Institutional Governance / faculty performance :

Yes; We use in-house online software for evaluation of teachers by students which is mandatory for the career advancement of faculty members.

Grievance redressal mechanism for faculty, staff and students :

Yes; Grievance of students as well as faculty if any can be reported to dedicated committee constituted from the senior professors of the Institute and remedial measures are taken by them within minimum duration.

Parent Teacher Association :

The Parent Teacher Association is a non government organization of the parents of all students of the College and the teaching faculty. It is a very active organization working in the College to provide a common forum for interaction of parents and teachers so as to improve facilities for academic excellence. It also

provides special and essential services to the students and the staff.

Some of the major activities of PTA are

- Provide stationary items for conducting series test for all branches of Engineering
- Meets the expense towards Identity cards
- Provides security services to the College, Men’s Hostel, Ladies Hostel and MBA Department
- Meets the expense towards sending the student’s progress report to parents
- Provides essential civil and electrical maintenance work to different departments and campus.
- Provides essential maintenance work to Men’s Hostel and Ladies Hostel
- Maintenance of Ladies amenity centre
- Reward the students securing highest mark in all branches
- Reward the students excelling in academics and extracurricular activities
- Sponsorship for students participating in Technical Seminars/Conferences outside the College
- Meets the expense for Campus doctor
- Provides training for staff advisors to counsel the students
- Financial assistance to activities like NSS, College Union election, sports and arts

#### 7. PROGRAMMES (UG)

SL NO	NAME OF PROGRAM	NO OF SEATS	DURATION
1	CIVIL ENGINEERING	120	8 SEMESTERS
2	MECHANICAL ENGINEERING	120	8 SEMESTERS
3	ELECTRICAL ENGINEERING	120	8 SEMESTERS
4	CHEMICAL ENGINEERING	60	8 SEMESTERS
5	ELCTRONICS AND COMMUNICATION ENGINEERING	60	8 SEMESTERS
6	COMPUTER SCIENCE ENGINEERING	60	8 SEMESTERS
7	PRODUCTION ENGINEERING	60	8 SEMESTERS
8	ARCHITECTURE	40	10 SEMESTERS

#### PROGRAMMES (PG)

DEPARTMENT	SLNO	NAME OF PROGRAM	NO OF SEATS	DURATION
Civil Engineering	1	<b>Environmental Engineering</b>	18	4 Semester
	2	Water Resources & Hydro informatics	18	4 SEMESTER
	3	Geotechnical Earthquake Engineering	18	4 SEMESTER
Mechanical Engineering	4	Internal Combustion Engines & Turbo Machinery	18	4 Semester
	5	Production Engineering	18	4 SEMESTER
Electrical and	6	Power Electronics	18	4 Semester

Electronics Engineering	7	Power Systems	18	4 SEMESTER
Chemical Engineering	8	Process Control	18	4 Semester
Electronics and Communication Engineering	9	Signal Processing and Communications	18	4 Semester
Computer Science Engineering	10	Computer Science	18	4 Semester
Production Engineering	11	Manufacturing Systems and Management	18	4 Semester
Architecture	12	M.Plan	18	4 Semester
MCA	13	Master In Computer Applications	30	6 Semester

#### PROGRAMMES (PhD)

SLNO	DEPARTMENT	NAME OF PROGRAM	NO OF SEATS	DURATION
1	CIVIL ENGINEERING	PhD Civil		
2	MECHANICAL ENGINEERING	PhD Mechanical		
3	ELECTRICAL ENGINEERING	PhD Electrical		
4	CHEMICAL ENGINEERING	PhD Chemical		
5	PRODUCTION ENGINEERING	PhD Production Engineering		
6	MATHEMATICS	PhD Mathematics		

#### 8. Facilities

- 8.1 Central Library
- 8.2 Centralized Computing Facility
- 8.3 EDUSAT
- 8.4 IRAC
- 8.5 College Bus
- 8.6 College Hostel
- 8.7 Centre For Continuing Education
- 8.8 Ideator
- 8.9 Oasis
- 8.10 Indian Society for Technical Education (ISTE)
- 8.11 National Service Scheme (NSS)
- 8.12 Technology Business Incubation cell (TBI)
- 8.13 FAB Lab
- 8.14 FOSS Club

#### 9. Scholarships offered:

10. DEPARTMENT'S DETAILS

A. CIVIL ENGINEERING

Name of the Department	CIVIL ENGINEERING		
Course	<ul style="list-style-type: none"> <li>· B.Tech in Civil Engineering</li> <li>· M.Tech in Environmental Engineering , Water Resources and Hydro Informatics, Geotechnical Earthquake Engineering, Structural Engineering</li> </ul>		
Level	UG & PG		
1 <sup>st</sup> year of approval by the Council			
Year wise Sanctioned intake UG	120(2016-17)	120(2017-18)	120 (2018-19)
Year wise Sanctioned intake PG	54(2016-17)	54(2017-18)	72(2018-19)
Year wise actual admissions UG	120(2016-17))	120(2017-18)	94(2018-19)
Cut off marks			
% students passed with Distinction			
% students passed with First Class			
Students placed			
Average pay package, Rs./Year			
Students opted for Higher Studies			
Accreditation status of the course			
Doctoral Courses			
Foreign Collaborations, if any			
Professional Society Memberships			
Professional activities			

B. MECHANICAL ENGINEERING

Name of the Department	MECHANICAL ENGINEERING		
Course	<ul style="list-style-type: none"> <li>· B.Tech in Mechanical Engineering and Industrial Engineering</li> <li>· M.Tech in Internal Combustion Engines and Turbo Machinery, Production Engineering,</li> </ul>		
Level	UG & PG		
1 <sup>st</sup> year of approval by the Council			
Year wise Sanctioned intake UG	120(2016-17)	120(2017-18)	120(2018-19)
Year wise Sanctioned intake PG	36(2016-17)	36(2017-18)	36(2018-19)
Year wise actual admissions UG	36(2016-17)	36(2017-18)	105(2018-19)
Cut off marks			
% students passed with Distinction			
% students passed with First Class			
Students placed			
Average pay package, Rs./Year			
Students opted for Higher Studies			
Accreditation status of the course			
Doctoral Courses			
Foreign Collaborations, if any			

Professional Society Memberships	
Professional activities	

C. ELECTRICAL AND ELECTRONICS ENGINEERING

Name of the Department	ELECTRICAL AND ELECTRONICS ENGINEERING		
Course	<ul style="list-style-type: none"> <li>✓ B.Tech in Electrical and Electronics Engineering</li> <li>✓ M.Tech in Power Electronics, Power Systems</li> </ul>		
Level	UG & PG		
1 <sup>st</sup> year of approval by the Council			
Year wise Sanctioned intake UG	100(2016-17)	100(2017-18)	120(2018-19)
Year wise Sanctioned intake PG	36(2016-17)	36(2017-18)	36(2018-19)
Year wise actual admissions UG	100(2016-17)	100(2017-18)	101(2018-19)
Cut off marks			
% students passed with Distinction			
% students passed with First Class			
Students placed			
Average pay package, Rs./Year			
Students opted for Higher Studies			
Accreditation status of the course			
Doctoral Courses			
Foreign Collaborations, if any			
Professional Society Memberships			
Professional activities			

D. CHEMICAL ENGINEERING

Name of the Department	CHEMICAL ENGINEERING		
Course	<ul style="list-style-type: none"> <li>✓ B.Tech in Chemical</li> <li>✓ M.Tech in Process Control, Health Safety and Environment Management</li> </ul>		
Level	UG & PG		
1 <sup>st</sup> year of approval by the Council			
Year wise Sanctioned intake UG	60(2016-17)	60(2017-18)	60(2018-19)
Year wise Sanctioned intake PG	18(2016-17)	18(2017-18)	36(2018-19)
Year wise actual admissions UG	60(2016-17)	60(2017-18)	49(2018-19)
Cut off marks			
% students passed with Distinction			
% students passed with First Class			
Students placed			
Average pay package, Rs./Year			
Students opted for Higher Studies			
Accreditation status of the course			
Doctoral Courses			
Foreign Collaborations, if any			



Professional Society Memberships	
Professional activities	

#### E. ELECTRONICS & COMMUNICATION ENGINEERING

Name of the Department	ELECTRONICS AND COMMUNICATION ENGINEERING		
Course	<ul style="list-style-type: none"> <li>✓ B.Tech in Electronics and Communication Engineering and Applied Electronics</li> <li>✓ M.Tech in Signal Processing and Communications, VLSI and Embedded Systems (Proposed)</li> </ul>		
Level	UG & PG		
1 <sup>st</sup> year of approval by the Council			
Year wise Sanctioned intake UG	60(2016-17)	60(2017-18)	60(2018-19)
Year wise Sanctioned intake PG	18(2016-17)	18(2017-18)	18(2018-19)
Year wise actual admissions UG	60(2016-17)	60(2017-18)	63(2018-19)
Cut off marks			
% students passed with Distinction			
% students passed with First Class			
Students placed			
Average pay package, Rs./Year			
Students opted for Higher Studies			
Accreditation status of the course			
Doctoral Courses			
Foreign Collaborations, if any			
Professional Society Memberships			
Professional activities			

#### F. COMPUTER SCIENCE AND ENGINEERING

Name of the Department	COMPUTER SCIENCE AND ENGINEERING		
Course	<ul style="list-style-type: none"> <li>✓ B. Tech in Computer Science and Engineering,</li> <li>✓ M.Tech in Computer Science</li> </ul>		
Level	UG & PG		
1 <sup>st</sup> year of approval by the Council			
Year wise Sanctioned intake UG	60(2016-17)	60(2017-18)	60(2018-19)
Year wise Sanctioned intake PG	18(2016-17)	18(2017-18)	18(2018-19)
Year wise actual admissions UG	60(2016-17)	60(2017-18)	62(2018-19)
Cut off marks			
% students passed with Distinction			
% students passed with First Class			
Students placed			
Average pay package, Rs./Year			
Students opted for Higher Studies			
Accreditation status of the course			
Doctoral Courses			

Foreign Collaborations, if any	
Professional Society Memberships	
Professional activities	

#### G. PRODUCTION ENGINEERING

Name of the Department	PRODUCTION ENGINEERING		
Course	<ul style="list-style-type: none"> <li>· B.Tech in Production Engineering</li> <li>· M.Tech in Manufacturing Systems and Management, Engineering Design (Proposed)</li> </ul>		
Level	UG & PG		
1 <sup>st</sup> year of approval by the Council			
Year wise Sanctioned intake UG	30(2016-17)	30(2017-18)	60(2018-19)
Year wise Sanctioned intake PG	18(2016-17)	18(2017-18)	18(2018-19)
Year wise actual admissions UG	30(2016-17)	30(2017-18)	30(2018-19)
Cut off marks			
% students passed with Distinction			
% students passed with First Class			
Students placed			
Average pay package, Rs./Year			
Students opted for Higher Studies			
Accreditation status of the course			
Doctoral Courses			
Foreign Collaborations, if any			
Professional Society Memberships			
Professional activities			

#### H. ARCHITECTURE

Name of the Department	ARCHITECTURE		
Course	<ul style="list-style-type: none"> <li>· B.Arch</li> <li>· M. Arch in Planning</li> </ul>		
Level	UG & PG		
1 <sup>st</sup> year of approval by the Council			
Year wise Sanctioned intake UG	40(2016-17)	40(2017-18)	40(2018-19)
Year wise Sanctioned intake PG	18(2016-17)	18(2017-18)	18(2018-19)
Year wise actual admissions UG	40(2016-17)	40(2017-18)	40(2018-19)
Cut off marks			
% students passed with Distinction			
% students passed with First Class			
Students placed			
Average pay package, Rs./Year			
Students opted for Higher Studies			
Accreditation status of the course			
Doctoral Courses			
Foreign Collaborations, if any			

Professional Society Memberships	
Professional activities	

I. MASTER IN COMPUTER APPLICATION

Name of the Department	MASTER IN COMPUTER APPLICATION		
Course	Masters in Computer Applications		
Level	PG		
1 <sup>st</sup> year of approval by the Council			
Year wise Sanctioned intake PG	30(2016-17)	30(2017-18)	30(2018-19)
Cut off marks			
% students passed with Distinction			
% students passed with First Class			
Students placed			
Average pay package, Rs./Year			
Students opted for Higher Studies			
Accreditation status of the course			
Doctoral Courses			
Foreign Collaborations, if any			
Professional Society Memberships			
Professional activities			

11. TEACHING STAFF DETAILS

NAME	DESIGNATION	QUALIFICATION
<b>CIVIL ENGINEERING</b>		
ABHASREE NAIR	ASST PROFESSOR	MTECH BTECH
ALAKA RAJ S	ASST PROFESSOR	MTECH BTECH
ANILKUMAR PARAYIL SANKARAN	ASSOCIATE PROFESSOR	M.TECH B.TECH
ANITHA PULIKKAL HARIDAS	ASSOCIATE PROFESSOR	M.TECH B.TECH
ANTO FRANCIS K	ASST PROFESSOR	PHD MSC(GEOLOGY) BSC MFIL
ARUN S	ASST PROFESSOR	PHD M TECH B TECH
ARYASREE MADHUKUMAR	ASST PROFESSOR	MTECH BTECH
ASHA BAHULAYAN	ASST PROFESSOR	M.TECH B.TECH
BINDU ACHATHUPARAMBIL GOPALAKRISHNAN	ASST PROFESSOR	M.TECH B.TECH
BINDU GANGADHARAN PILLAI	ASST PROFESSOR	M.E B.TECH PGDHRM
CHEMMENTHETTA DEEPTHI GOPINATH	ASST PROFESSOR	MTECH BTECH
DINESH KUMAR KANDIYOOR SANKAPPAN	ASSOCIATE PROFESSOR	M.TECH B.TECH
HARITHA C R	ASST PROFESSOR	MTECH BTECH
INDUJA P C	ASST PROFESSOR	MTECH BTECH
KRISHNENDU MV	ASST PROFESSOR	MTECH BTECH
LAL CHERUKUNNATHU VELAYUDHAN	ASSOCIATE PROFESSOR	PHD M.E B.TECH
MEENA JOHN MALIAKAL	ASST PROFESSOR	MTECH B.TECH
MEERA VASUDEVAN	ASSOCIATE PROFESSOR	PHD M.TECH B.TECH
MIJI CHERIAN RAPPAKKARAN	ASST PROFESSOR	M.TECH B.TECH

MINIMOL PIEUS THANIKKAL	ASST PROFESSOR	M.TECH B.TECH
NEERA LALI ANAND	ASST PROFESSOR	M.TECH B.TECH
NOWSHAJA PT	PROFESSOR	PHD ME BTECH
REEBA THOMAS	ASSOCIATE PROFESSOR	M.TECH B.TECH
SAJIKUMAR NEELAKANTAN	PROFESSOR	PHD M.TECH B.TECH
SAMEENA KHALID	ASST PROFESSOR	MTECH BTECH
SAVITHA T SUDHAKARAN	ASST PROFESSOR	MTECH BTECH
SEEMA ACHATHUPARAMBIL GOPALAKRISHNAN	ASST PROFESSOR	ME BTECH
SEENA P	ASSOCIATE PROFESSOR	PHD MTECH BTECH
SHAHANA SHIRIN AH	ASST PROFESSOR	MTECH BTECH
SILPA MOHAN K	ASST PROFESSOR	MTECH BTECH
SIVAN PAYATHUPARAMBIL PARAMESWARAN	ASST PROFESSOR	M.E. B. TECH (CIVIL ENGG.)
SMITHA MOHAN KANJIRAPARAMBIL	ASST PROFESSOR	MTECH BTECH
SOSAMONY KOOTHOOR JOHNY	ASST PROFESSOR	M.TECH B.TECH
SREEDEVI V.M	ASST PROFESSOR	MTECH BTECH
SUBAIDA E A	ASSOCIATE PROFESSOR	PHD MTECH BTECH
SUDHA CHULLIPARAMPIL PRABHAKARAN	ASST PROFESSOR	M.TECH B.TECH
SUMAM KOTTEKKAT SURENDRAN	ASSOCIATE PROFESSOR	PHD M.S B.TECH
SWARNALATHA K	ASST PROFESSOR	PHD MTECH BTECH
UNNIKRISHNAN N	PROFESSOR	PHD MTECH BTECH
VINOD P	PROFESSOR	PHD ME BTECH
<b>MECHANICAL ENGINEERING</b>		
ABDUL SAMAD ABUBUCKER PANAYAMPILLY	ASSOCIATE PROFESSOR	M TECH B.TECH DAE
ANEEZ HYDARI PITCHAKANNU KADERSHAH	ASST PROFESSOR	M.PHIL B.TECH
ANTONY PAUL VAZHAPIILLY		B TECH
ANWAR SADIQUE	ASST PROFESSOR	MTECH BTECH
ARUN SUBRAMANIAN MADATHIPARAMBIL	ASST PROFESSOR	M TECH B TECH
BALAKRISHNAN K	ASST PROFESSOR	M TECH B.TECH
BINDU DHARMAJAN MULLUVATHUKKAL	ASST PROFESSOR	M.TECH BTECH(MECH.ENGG.)
I.M. CHANDRAN ILLATHMEETHAL	ASSOCIATE PROFESSOR	M.TECH (IE) B. TECH (MECH ENGG)
JAYEE VARGHESE K	ASST PROFESSOR	M TECH B.TECH
JIBI K K	ASST PROFESSOR	MTECH BTECH
JOSE AUGSTIN	ASST PROFESSOR	M TECH B.TECH
LALU PAILY PULLOKARAN	ASST PROFESSOR	M TECH B TECH
MAHIPAL DIVAKARAN	ASSOCIATE PROFESSOR	M TECH B.TECH
MANESH K K	ASSOCIATE PROFESSOR	PHD M TECH B TECH
MANMOHAN C M	ASST PROFESSOR	M TECH B.TECH
MANOJ JOSE PULIKKOTTIL	ASST PROFESSOR	MTECH B TECH
MOHANDAS V P	PROFESSOR	PHD MTECH BTECH
MUBARAK KUNJUMOIDEEN AYKKARA	ASST PROFESSOR	M TECH B.TECH
PAUL CHACKO KUTTICHIRAYIL	ASST PROFESSOR	NA B.TECH
PRADEEP M KAMATH	ASST PROFESSOR	PHD M.TECH B.TECH
PRAMOD KESAVAN VALIYAKALLUMKAL	ASSOCIATE PROFESSOR	PHD M TECH B.TECH
RAHUL K R	ASST PROFESSOR	MTECH BTECH
RAJEEV VAMADEVAN	ASSOCIATE PROFESSOR	PHD MTECH BTECH

RAJESH VANCHIPURA	ASST PROFESSOR	PHD MTECH B.TECH
RAMACHANDRAN K K	ASSOCIATE PROFESSOR	PHD M.TECH. B.TECH (MECH. ENGG.)
RAMESH A	ASSOCIATE PROFESSOR	PHD MTECH BTECH
REKHA L	ASST PROFESSOR	PHD MECHANICAL
SAJITH C SUBRAMANIAN	ASST PROFESSOR	MTECH BTECH
SANDHYA M	ASST PROFESSOR	PHD M TECH B.TECH
SOMAN AR	ASSOCIATE PROFESSOR	PHD MTECH B.TECH
SUDHEESH SAROJINI RAVEENDRAN NAIR	ASST PROFESSOR	M E B.TECH
SUNIL ABDUL SATHAR	ASST PROFESSOR	MTECH B TECH
SUNIL JEROME	ASST PROFESSOR	MTECH BTECH
SUNIL KUMAR CHEERATH PUTHANVEEDU	ASSOCIATE PROFESSOR	PHD M TECH, MBA B.TECH
TENNISON. K. JOSE	ASST PROFESSOR	MTECH B TECH BSC MATHEMATICS
VENUGOPAL G	PROFESSOR	PHD MTECH BTECH MBA
REKHA L	ASST PROFESSOR	M.TECH B.TECH
<b>ELECTRICAL AND ELECTRONICS ENGINEERING</b>		
ABDUL SALEEM P K	ASST PROFESSOR	PHD MTECH BTECH
AISHA KALAM C A	ASST PROFESSOR	MTECH BTECH
ANJU FRANCIS	ASST PROFESSOR	MTECH BTECH
BINDUMOL E K	ASST PROFESSOR	PHD MTECH BTECH
BINITHA JOSEPHMAMPILLY	ASST PROFESSOR	MTECH BTECH
BINOY B B	ASST PROFESSOR	MTECH BTECH
CHANDRA BOSE K N	ASST PROFESSOR	MTECH BTECH
HARYHAR A S	ASST PROFESSOR	BTECH
JAISON MATHEW	ASST PROFESSOR	PHD MTECH BTECH
JASMIN EA	ASSOCIATE PROFESSOR	PHD MTECH BTECH
JAYANAND BALAKRISHNAN	PROFESSOR	PHD MTECH BTECH
JAYASOORYA J	ASST PROFESSOR	MTECH BTECH
JERIN JAMES	ASST PROFESSOR	MTECH BTECH
JJI K S	ASST PROFESSOR	PHD MTECH BTECH
JOSEPH KD	ASST PROFESSOR	MTECH BTECH
LALGY GOPI	ASST PROFESSOR	MTECH BTECH
LALY MJ	ASST PROFESSOR	MTECH BTECH PGDGC
LISY E R	ASST PROFESSOR	MTECH BTECH
MANJU B	ASST PROFESSOR	MTECH BTECH
MINI V	ASST PROFESSOR	MTECH BTECH
MINU MANUEL P	ASST PROFESSOR	MTECH BTECH
NANDAKUMAR M	PROFESSOR	PHD MTECH BTECH
NISHA G POOTHULLIL	ASST PROFESSOR	MTECH BTECH
PRAMELAKUMARI KRISHNAN	ASSOCIATE PROFESSOR	MTECH BTECH
PREETHA K P	ASSOCIATE PROFESSOR	MTECH BTECH
RAHUL RAJEEV	ASST PROFESSOR	MTECH BTECH
RAMESHKUMAR P	ASST PROFESSOR	PHD MTECH BTECH
RANI TR	ASST PROFESSOR	MTECH BTECH
REJI.P	PROFESSOR	PHD MTECH BTECH
ROSHINRAM P T	ASST PROFESSOR	MTECH BTECH

SANISH KUMAR.T G	ASST PROFESSOR	MTECH BTECH
SUBADHRA PR	ASST PROFESSOR	MTECH BTECH
SUHARA E M	ASST PROFESSOR	MTECH BTECH
SUNILA M S	ASST PROFESSOR	MTECH BTECH
SURESH K DAMODARAN	ASST PROFESSOR	MTECH BTECH
UMA SYAMKUMAR	ASST PROFESSOR	MTECH BTECH
<b>CHEMICAL ENGINEERING</b>		
AJEESH KIZHAKKEVEEDU NARAYANAN	ASST PROFESSOR	MTECH BTECH
ANJANA RAMACHANDRAN	ASST PROFESSOR	PHD MTECH BTECH
FASNABI PUTHENKATTIL ABDUKUNJI	ASST PROFESSOR	PHD MTECH BTECH
HASEENA POTHYIL VEERAVU	ASST PROFESSOR	MTECH BTECH
INDIRA ITHIKKAT THAMU	ASST PROFESSOR	MSC BSC MPHIL,NET,B.ED
MANJU MS	ASST PROFESSOR	PHD MTECH BTECH
MANOJ NARAYANAN	ASST PROFESSOR	M.TECH B.TECH
MERCY ANNA PHILIP	ASST PROFESSOR	PHD MTECH BTECH
RAYAMMARAKKAR ABDUL JAMAL	ASSOCIATE PROFESSOR	MSC BSC M TECH ECE
REJINI VADAKKEKKARA ONCHY	PROFESSOR	PHD MTECH BTECH
SACHITHRA K	ASST PROFESSOR	MTECH BTECH
SAJEENA BEEVI BASHEER	ASST PROFESSOR	MTECH BTECH
SAURABH SAHADEV	ASST PROFESSOR	M. TECH. B. TECH.
SOLOMAN ANTONY POOPANA	PROFESSOR	PHD MTECH BTECH
SUBIN POULOSE	ASST PROFESSOR	MTECH BTECH
VINOD PALAYOOR RAPHAEL	ASST PROFESSOR	PHD MSC BSC PH.D,NET,M.PHIL,B.ED
SAJEENA BEEVI BASHEER	ASST PROFESSOR	MTECH BTECH
<b>ELECTRONICS ENGINEERING</b>		
ANILKUMAR C D	ASSOCIATE PROFESSOR	PHD MTECH BTECH
LATHA K.N	ASST PROFESSOR	M.TECH. B.TECH.
MANOJ K.	ASST PROFESSOR	MTECH BTECH
MUHAMMED ASHRAF N	ASST PROFESSOR	MTECH BTECH
MUNEERA C.R.	ASSOCIATE PROFESSOR	MTECH BTECH
PREMANAND B	ASST PROFESSOR	M TECH B TECH
ROY FRANCIS	ASST PROFESSOR	MTECH BTECH
SINDHU N	ASST PROFESSOR	M TECH B TECH
ASHA J	ASST PROFESSOR	ME BTECH
ATHIRA RAMESH	ASST PROFESSOR	MTECH BTECH
MOHAMED SALIH K K	ASST PROFESSOR	MTECH BTECH
REMYA R	ASST PROFESSOR	ME COMMUNICATION SYSTEMS BTECH
SHAMLA B	ASST PROFESSOR	MTECH BTECH
SUBHIJA E.N	ASST PROFESSOR	ME BTECH
THAJUDIN AHAMED V I	PROFESSOR	PHD M.TECH B.TECH
ANISH BABU KALLARAKKAL KAMARUDHEEN	ASST PROFESSOR	MTECH BTECH
ANETT ANTONY	ASST PROFESSOR	MTECH BTECH
RIYAS KK	ASST PROFESSOR	MTECH BTECH MBA

<b>COMPUTER SCIENCE &amp; ENGINEERING</b>		
SMINESH C.N.	ASSOCIATE PROFESSOR	ME BTECH DOING PHD
AMRUTHA BENNY	ASST PROFESSOR	MTECH BTECH
SWARAJ K P	ASST PROFESSOR	PHD ME BTECH
VIPIN KUMAR KOTTIARA STHIAVAN	ASST PROFESSOR	MTECH BTECH
AJISH KUMAR KS	ASST PROFESSOR	MTECH BTECH
ALI AKBAR N	ASST PROFESSOR	MTECH BTECH
EZUDHEEN P	ASST PROFESSOR	MTECH BTECH DOING PHD
KALA M T	ASST PROFESSOR	ME BTECH
RAHAMATHULLA K	ASST PROFESSOR	MTECH BTECH
UMASREE AK	ASST PROFESSOR	MTECH BTECH
VARUN K	ASST PROFESSOR	MTECH BTECH
AJAY JAMES	ASST PROFESSOR	M TECH B TECH DOING PHD
BISNA N D	ASST PROFESSOR	MTECH B TECH
HELEN K J	ASSOCIATE PROFESSOR	M.TECH B.TECH
MANOJ KUMAR K V	PROFESSOR	M E B TECH
<b>PRODUCTION ENGINEERING</b>		
AJU SS	ASST PROFESSOR	ME BTECH
ANIL RAJAGOPAL K P	ASST PROFESSOR	MTECH BTECH
ARUN C	ASST PROFESSOR	ME BTECH
BOBY K GEORGE	ASST PROFESSOR	PHD MTECH BTECH MBA
HARIKUMAR A R	ASST PROFESSOR	ME BTECH
HARIS NADUTHODI	ASSOCIATE PROFESSOR	PHD MTECH BTECH MBA
JAYASREE N	ASSOCIATE PROFESSOR	MTECH BTECH
MANJITH KUMAR B	ASST PROFESSOR	PHD MTECH BTECH
PARAMESWARAN MOOTHEDATH	ASSOCIATE PROFESSOR	MTECH BTECH PGDGAC
SATISH PARASURAMAN	PROFESSOR	PHD MBA BTECH
SHALIJ P R	ASSOCIATE PROFESSOR	PHD MTECH BTECH PGDFM
SUJATHA INDIRA	ASST PROFESSOR	MTECH BTECH
SUNIL D.T	ASST PROFESSOR	MTECH BTECH
UMARALI KALATHINGAL	ASST PROFESSOR	MTECH BTECH
<b>ARCHITECTURE</b>		
AISHWRYA SUDHEER	ASST PROFESSOR	BARCH
AJAYAKUMAR VASUMATHI SAHADEVAN	LECTURER	B F A
BIJU CHEMMANOR APPUNNY	ASST PROFESSOR	M.PLAN B.ARCH
BINDU CHEMMANOR APPUNNY	ASST PROFESSOR	M.PLAN B.ARCH MSW,PGDPC
GARY GILSON	ASST PROFESSOR	BARCH
GEETHA AMMINI	ASST PROFESSOR	M.PLAN B.TECH
JOSNA RAPHAEL P	ASSOCIATE PROFESSOR	PHD M.ARCH B.ARCH
LAKSHMI S R	ASST PROFESSOR	MPLAN BARCH
MINU BENNY	ASST PROFESSOR	MPLAN BARCH
RANJINI BHATTATHIRIPAD T	PROFESSOR	PHD M.ARCH B.ARCH
REKHA VIJAYAKUMAR	ASST PROFESSOR	MARCH BARCH
RESHMA M	ASST PROFESSOR	MPLAN BARCH
SHIJINA NP	ASST PROFESSOR	MARCH BARCH

SUJITH M	ASST PROFESSOR	BARCH
SURYA SARASAMMA	ASST PROFESSOR	B.ARCH
<b>MASTER IN COMPUTER APPLICATION</b>		
ALI M. A	ASST PROFESSOR	PHD MTECH B.TECH
HREDYA SUNDARAN	ASST PROFESSOR	MCA BSC
JESNA JAMAL	ASST PROFESSOR	MTECH BTECH
NIDHIN A S	ASST PROFESSOR	MCA,MPHIL,ME BSC
REENA P	PROFESSOR	PHD MTECH BTECH
RESHMI V	ASST PROFESSOR	MTECH BTECH
SAJEENA SHAJI	ASST PROFESSOR	MTECH BTECH
SOUMIA CHANDRAN M	ASST PROFESSOR	MTECH B.TECH
<b>PHYSICS</b>		
R A ABDUL JAMAL	ASSOCIATE PROFESSOR	MSC MTECH
VASANTHAKUMAR E G	ASST PROFESSOR	MSC NET
JESTIN M G	ASST PROFESSOR	MSC BEd NET
RAJESH P M	ASST PROFESSOR	MSC BSC UGC-JRF,NET
PRASANTH P	ASST PROFESSOR	MSC BEd NET
MANJOJ R	ASST PROFESSOR	MSC PHD
<b>CHEMISTRY</b>		
TRESA GERRARD MAJELLA	ASSOCIATE PROFESSOR	MSC BSC
BINDU T K	ASST PROFESSOR	PHD
SHAJU KANIMANGALATHU SHANMUGAN	ASST PROFESSOR	PHD MSC BSC MPHIL, MTECH,B.ED,NET
INDIRA T	ASST PROFESSOR	MSC M PHIL NET
VINOD P RAPHEAL	ASST PROFESSOR	PHD MSC MPHIL SET NET
SHERRY SEBASTIAN	ASST PROFESSOR	MSC BSC NET
UMADEV T U	ASST PROFESSOR	MSC MPHIL NET
<b>MATHEMATICS</b>		
SHEEBA MB	ASSOCIATE PROFESSOR	PHD MSC BSC
GOPAKUMAR B	ASST PROFESSOR	M.SC MATHEMATICS B.SC MATHEMATICS B.ED
VISWANATH NARAYANAN CHULLIPARAMBIL	ASST PROFESSOR	PHD M.SC MATHEMATICS B.SC MATHEMATICS
RAJAN MANANGOTTU PARAYIL	ASST PROFESSOR	M.SC MATHEMATICS B.SC MATHEMATICS
SATHI PANATTIL	ASST PROFESSOR	M.SC MATHEMATICS B.SC MATHEMATICS NET
SINDHU MATHEW P	ASST PROFESSOR	MSC
SEEMA VARGHESE KAVUNGAL	ASST PROFESSOR	PHD M.SC B.SC UGC-NET
SAJEEV NAIR THARAYIL	ASST PROFESSOR	PHD MSC. BSC UGC-NET
<b>ECONOMICS</b>		
RAJESH P	ASST PROFESSOR	