

# **GOVERNMENT ENGINEERING COLLEGE**

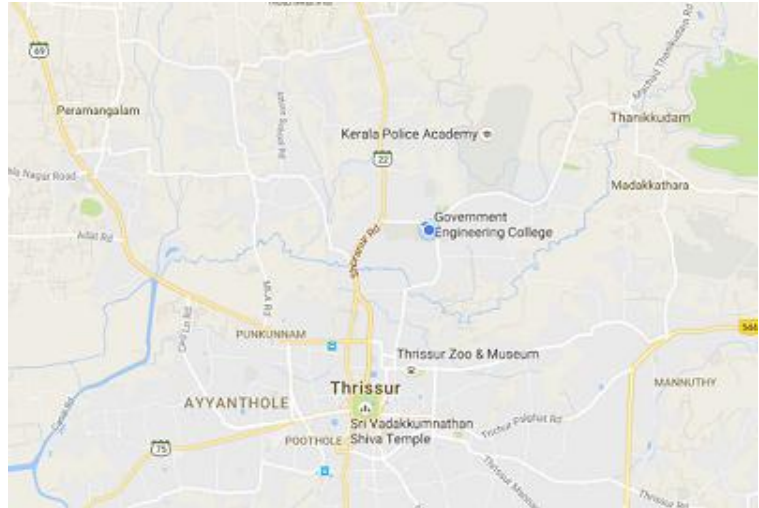
## **THRISSUR – 695016**

**PH: 0487 - 2336124, 2515502 FAX: 0487 2336124 Email: [principal@gectcr.ac.in](mailto:principal@gectcr.ac.in)**

### **MANDATORY DISCLOSURE**

- |                                   |   |  |
|-----------------------------------|---|--|
| 1. AICTE File No.                 | : | South-West/1-3326930614/2017/EOA           |
| 2. Date & Period of last approval | : | 10/04/2017 (Academic year 2017-18)         |
| 3. Name of the Institution        | : | GOVERNMENT ENGINEERING COLLEGE<br>THRISSUR |
| Address of the Institution        | : | ENGINEERING COLLEGE PO<br>RAMAVARMAPURAM   |
| City & Pin Code                   | : | THRISSUR, PINCODE-680009                   |
| State / UT                        | : | KERALA                                     |
| Longitude & Latitude              | : | 0.5546° N, 76.2247° E                      |

Location of the institution in map



- |                                   |   |  |
|-----------------------------------|---|--|
| Phone number with STD code        | : | 0487 2334144   |
| FAX number with STD code          | : | 0487 2336124   |
| Office hours at the Institution   | : | 9.00 AM to 4.00 PM from Monday to Saturday                         |
| Academic hours at the Institution | : | 9.00 AM to 4.00 PM from Monday to Friday                           |
| Email                             | : | <a href="mailto:principal@gectcr.ac.in">principal@gectcr.ac.in</a> |
| Website                           | : | <a href="http://gectcr.ac.in">http://gectcr.ac.in</a>              |
| Nearest Railway Station           | : | Thrissur   |
| Nearest Airport (dist in Km)      | : | Cochin International Airport (56.2kms)                             |

Vision of the Institution :

**To be a Premier Institution of Excellence in Engineering Education and Research for Sustainable Development.**

Mission of the Institution :

- i. Provide Quality Education in Engineering and Technology**
- ii. Foster Passion for Research**
- iii. Transform the Students into Committed Technical Personnel for the Social and Economic Wellbeing of the Nation**

Type of Institution : Government

Category (1) of the Institution

Category (2) of the Institution : Co-Ed

4. Name of the organization running the Institution : Directorate of Technical Education, Govt. of Kerala  
running the Institution

Type of the organization : Government

Address of the organization : Directorate of Technical Education, Trivandrum,  
Kerala

Registered with : NA

Registration Date : NA

Website of the organization : <http://gectcr.ac.in>

5. Name of the affiliating University / Board : APJ Abdul Kalam Technological University &  
University of Kerala

Address : APJ Abdul Kalam Technological University, CET  
Campus, Thiruvananthapuram

Website : [www.ktu.edu.in](http://www.ktu.edu.in), University Of Kerala, Senate

House Campus, Palayam, Thiruvananthapuram – 34

Latest affiliation period 2016-17

6. Name of Principal / Director : Dr. Jayanand B

Exact Designation : Principal (with full additional charge)

Phone number with STD code : 0487-2334144

FAX number with STD code : 0487-2334590

Email : [principal@gectcr.ac.in](mailto:principal@gectcr.ac.in)

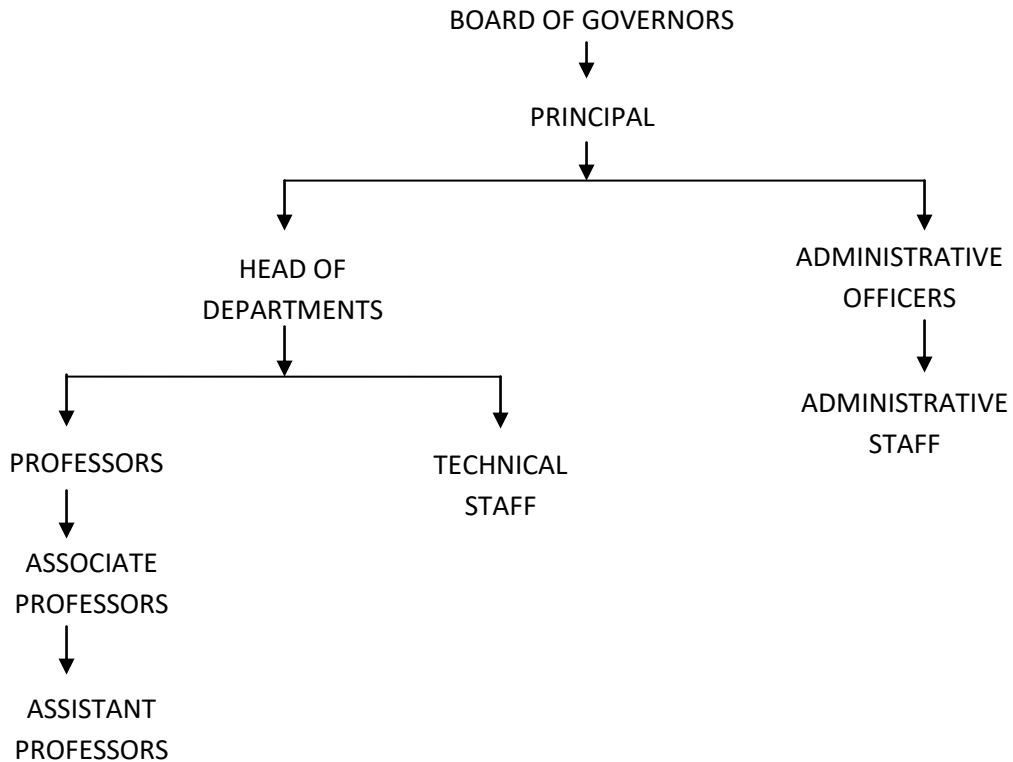
Highest Degree : PhD

Field of Specialization : Power Electronics

## Governing Body Members

SLNO	NAME AND ADDRESS	POSITION IN BoG
1	Dr. Ligy Philip Professor, IIT Madras	CHAIRMAN
2	Dr. Satish Vasu Kailas Professor, IISc Bangalore	MEMBER
3	Sri. Anil Warriar Vice President, SAP Labs	MEMBER
4	Dr. N. Sajikumar Professor, CE	Institutional Member (Senior Faculty)
5	Dr. M. Nandakumar Professor, EEE	Institutional Member (Senior Faculty)
6	Higher Education Department State Government Nominee	Member (Ex Officio)
7	Government Finance Department State Government Nominee	Member (Ex Officio)
8	Director of Technical Education	Member (Ex Officio)
9	Director SPFU	Member (Ex Officio)
10	University Nominee	Dr. Vrinda V Nair Dean (Research), KTU
11	AICTE Nominee	Dr. Ramesh Unnikrishnan Regional Officer & Director, AICTE-South Western Regional Office (SWRO), Tvpm
12	Principal of Institution	Member Secretary (Ex-Officio)

## ORGANIZATIONAL CHART



Student feedback mechanism on Institutional Governance / faculty performance :

Yes; We use in-house online software for evaluation of teachers by students which is mandatory for the career advancement of faculty members.

Grievance redressal mechanism for faculty, staff and students :

Yes; Grievance of students as well as faculty if any can be reported to dedicated committee constituted from the senior professors of the Institute and remedial measures are taken by them within minimum duration.

Parent Teacher Association :

The Parent Teacher Association is a non government organization of the parents of all students of the College and the teaching faculty. It is a very active organization working in the College to provide a common forum for interaction of parents and teachers so as to improve facilities for academic excellence. It also

provides special and essential services to the students and the staff.

Some of the major activities of PTA are

- Provide stationary items for conducting series test for all branches of Engineering
- Meets the expense towards Identity cards
- Provides security services to the College, Men’s Hostel, Ladies Hostel and MBA Department
- Meets the expense towards sending the student’s progress report to parents
- Provides essential civil and electrical maintenance work to different departments and campus.
- Provides essential maintenance work to Men’s Hostel and Ladies Hostel
- Maintenance of Ladies amenity centre
- Reward the students securing highest mark in all branches
- Reward the students excelling in academics and extracurricular activities
- Sponsorship for students participating in Technical Seminars/Conferences outside the College
- Meets the expense for Campus doctor
- Provides training for staff advisors to counsel the students
- Financial assistance to activities like NSS, College Union election, sports and arts

7. PROGRAMMES (UG)

SL NO	NAME OF PROGRAM	NO OF SEATS	DURATION
1	CIVIL ENGINEERING	120	8 SEMESTERS
2	MECHANICAL ENGINEERING	120	8 SEMESTERS
3	ELECTRICAL ENGINEERING	100	8 SEMESTERS
4	CHEMICAL ENGINEERING	60	8 SEMESTERS
5	ELCTRONICS AND COMMUNICATION ENGINEERING	60	8 SEMESTERS
6	COMPUTER SCIENCE ENGINEERING	60	8 SEMESTERS
7	PRODUCTION ENGINEERING	30	8 SEMESTERS
8	ARCHITECTURE	20	10 SEMESTERS

PROGRAMMES (PG)

DEPARTMENT	SLNO	NAME OF PROGRAM	NO OF SEATS	DURATION
Civil Engineering	1	<b>Environmental Engineering</b>	18	4 Semester
	2	Water Resources & Hydro informatics	18	4 SEMESTER
	3	Geotechnical Earthquake Engineering	18	4 SEMESTER
Mechanical Engineering	4	Internal Combustion Engines & Turbo Machinery	18	4 Semester
	5	Production Engineering	18	4 SEMESTER
Electrical and	6	Power Electronics	18	4 Semester

Electronics Engineering	7	Power Systems	18	4 SEMESTER
Chemical Engineering	8	Process Control	18	4 Semester
Electronics and Communication Engineering	9	Signal Processing and Communications	18	4 Semester
Computer Science Engineering	10	Computer Science	18	4 Semester
Production Engineering	11	Manufacturing Systems and Management	18	4 Semester
Architecture	12	M.Plan	18	4 Semester
MCA	13	Master In Computer Applications	30	6 Semester

#### PROGRAMMES (PhD)

SLNO	DEPARTMENT	NAME OF PROGRAM	NO OF SEATS	DURATION
1	CIVIL ENGINEERING	PhD Civil		
2	MECHANICAL ENGINEERING	PhD Mechanical		
3	ELECTRICAL ENGINEERING	PhD Electrical		
4	CHEMICAL ENGINEERING	PhD Chemical		
5	PRODUCTION ENGINEERING	PhD Production Engineering		

#### 8. Facilities

- 8.1 Central Library
- 8.2 Centralized Computing Facility
- 8.3 EDUSAT
- 8.4 IRAC
- 8.5 College Bus
- 8.6 College Hostel
- 8.7 Centre For Continuing Education
- 8.8 Ideator
- 8.9 Oasis
- 8.10 Indian Society for Technical Education (ISTE)
- 8.11 National Service Scheme (NSS)
- 8.12 Technology Business Incubation cell (TBI)

#### 9. Scholarships offered:

10. DEPARTMENT'S DETAILS

A. CIVIL ENGINEERING

Name of the Department	CIVIL ENGINEERING		
Course	<ul style="list-style-type: none"> <li>• B.Tech in Civil Engineering</li> <li>• M.Tech in Environmental Engineering , Water Resources and Hydro Informatics, Geotechnical Earthquake Engineering</li> </ul>		
Level	UG & PG		
1 <sup>st</sup> year of approval by the Council			
Year wise Sanctioned intake UG	120(2013-14)	120(2014-15)	120 (2015-16)
Year wise Sanctioned intake PG	54(2013-14)	54(2014-15)	54(2015-16)
Year wise actual admissions UG	120(2013-14)	120(2014-15)	120(2015-16)
Cut off marks			
% students passed with Distinction			
% students passed with First Class			
Students placed			
Average pay package, Rs./Year			
Students opted for Higher Studies			
Accreditation status of the course			
Doctoral Courses			
Foreign Collaborations, if any			
Professional Society Memberships			
Professional activities			

B. MECHANICAL ENGINEERING

Name of the Department	MECHANICAL ENGINEERING		
Course	<ul style="list-style-type: none"> <li>• B.Tech in Mechanical Engineering and Industrial Engineering</li> <li>• M.Tech in Internal Combustion Engines and Turbo Machinery, Production Engineering</li> </ul>		
Level	UG & PG		
1 <sup>st</sup> year of approval by the Council			
Year wise Sanctioned intake UG	120(2013-14)	120(2014-15)	120(2015-16)
Year wise Sanctioned intake PG	36(2013-14)	36(2014-15)	36(2015-16)
Year wise actual admissions UG	36(2013-14)	36(2014-15)	120(2015-16)
Cut off marks			
% students passed with Distinction			
% students passed with First Class			
Students placed			
Average pay package, Rs./Year			
Students opted for Higher Studies			
Accreditation status of the course			
Doctoral Courses			
Foreign Collaborations, if any			

Professional Society Memberships	
Professional activities	

C. ELECTRICAL AND ELECTRONICS ENGINEERING

Name of the Department	ELECTRICAL AND ELECTRONICS ENGINEERING		
Course	<ul style="list-style-type: none"> <li>• B.Tech in Electrical and Electronics Engineering</li> <li>• M.Tech in Power Electronics, Power Systems</li> </ul>		
Level	UG & PG		
1 <sup>st</sup> year of approval by the Council			
Year wise Sanctioned intake UG	100(2013-14)	100(2014-15)	100(2015-16)
Year wise Sanctioned intake PG	36(2013-14)	36(2014-15)	36(2015-16)
Year wise actual admissions UG	100(2013-14)	100(2014-15)	100(2015-16)
Cut off marks			
% students passed with Distinction			
% students passed with First Class			
Students placed			
Average pay package, Rs./Year			
Students opted for Higher Studies			
Accreditation status of the course			
Doctoral Courses			
Foreign Collaborations, if any			
Professional Society Memberships			
Professional activities			

D. CHEMICAL ENGINEERING

Name of the Department	CHEMICAL ENGINEERING		
Course	<ul style="list-style-type: none"> <li>• B.Tech in Chemical</li> <li>• M.Tech in Process Control</li> </ul>		
Level	UG & PG		
1 <sup>st</sup> year of approval by the Council			
Year wise Sanctioned intake UG	60(2013-14)	60(2014-15)	60(2015-16)
Year wise Sanctioned intake PG	18(2013-14)	18(2014-15)	18(2015-16)
Year wise actual admissions UG	60(2013-14)	60(2014-15)	60(2015-16)
Cut off marks			
% students passed with Distinction			
% students passed with First Class			
Students placed			
Average pay package, Rs./Year			
Students opted for Higher Studies			
Accreditation status of the course			
Doctoral Courses			
Foreign Collaborations, if any			



Professional Society Memberships	
Professional activities	

#### E. ELECTRONICS & COMMUNICATION ENGINEERING

Name of the Department	ELECTRONICS AND COMMUNICATION ENGINEERING		
Course	<ul style="list-style-type: none"> <li>B.Tech in Electronics and Communication Engineering and Applied Electronics</li> <li>M.Tech in Signal Processing and Communications</li> </ul>		
Level	UG & PG		
1 <sup>st</sup> year of approval by the Council			
Year wise Sanctioned intake UG	60(2013-14)	60(2014-15)	60(2015-16)
Year wise Sanctioned intake PG	18(2013-14)	18(2014-15)	18(2015-16)
Year wise actual admissions UG	60(2013-14)	60(2014-15)	60(2015-16)
Cut off marks			
% students passed with Distinction			
% students passed with First Class			
Students placed			
Average pay package, Rs./Year			
Students opted for Higher Studies			
Accreditation status of the course			
Doctoral Courses			
Foreign Collaborations, if any			
Professional Society Memberships			
Professional activities			

#### F. COMPUTER SCIENCE AND ENGINEERING

Name of the Department	COMPUTER SCIENCE AND ENGINEERING		
Course	<ul style="list-style-type: none"> <li>B. Tech in Computer Science and Engineering,</li> <li>M.Tech in Computer Science</li> </ul>		
Level	UG & PG		
1 <sup>st</sup> year of approval by the Council			
Year wise Sanctioned intake UG	60(2013-14)	60(2014-15)	60(2015-16)
Year wise Sanctioned intake PG	18(2013-14)	18(2014-15)	18(2015-16)
Year wise actual admissions UG	60(2013-14)	60(2014-15)	60(2015-16)
Cut off marks			
% students passed with Distinction			
% students passed with First Class			
Students placed			
Average pay package, Rs./Year			
Students opted for Higher Studies			
Accreditation status of the course			
Doctoral Courses			

Foreign Collaborations, if any	
Professional Society Memberships	
Professional activities	

#### G. PRODUCTION ENGINEERING

Name of the Department	PRODUCTION ENGINEERING		
Course	<ul style="list-style-type: none"> <li>• B.Tech in Chemical</li> <li>• M.Tech in Manufacturing Systems and Management</li> </ul>		
Level	UG & PG		
1 <sup>st</sup> year of approval by the Council			
Year wise Sanctioned intake UG	30(2013-14)	30(2014-15)	30(2015-16)
Year wise Sanctioned intake PG	18(2013-14)	18(2014-15)	18(2015-16)
Year wise actual admissions UG	30(2013-14)	30(2014-15)	30(2015-16)
Cut off marks			
% students passed with Distinction			
% students passed with First Class			
Students placed			
Average pay package, Rs./Year			
Students opted for Higher Studies			
Accreditation status of the course			
Doctoral Courses			
Foreign Collaborations, if any			
Professional Society Memberships			
Professional activities			

#### H. ARCHITECTURE

Name of the Department	ARCHITECTURE		
Course	<ul style="list-style-type: none"> <li>• B.Arch</li> <li>• M. Arch in Planning</li> </ul>		
Level	UG & PG		
1 <sup>st</sup> year of approval by the Council			
Year wise Sanctioned intake UG	20(2013-14)	20(2014-15)	20(2015-16)
Year wise Sanctioned intake PG	18(2013-14)	18(2014-15)	18(2015-16)
Year wise actual admissions UG	20(2013-14)	20(2014-15)	20(2015-16)
Cut off marks			
% students passed with Distinction			
% students passed with First Class			
Students placed			
Average pay package, Rs./Year			
Students opted for Higher Studies			
Accreditation status of the course			
Doctoral Courses			
Foreign Collaborations, if any			

Professional Society Memberships	
Professional activities	

I. MASTER IN COMPUTER APPLICATION

Name of the Department	MASTER IN COMPUTER APPLICATION		
Course	Masters in Computer Applications		
Level	PG		
1 <sup>st</sup> year of approval by the Council			
Year wise Sanctioned intake PG	30(2013-14)	30(2014-15)	30(2015-16)
Cut off marks			
% students passed with Distinction			
% students passed with First Class			
Students placed			
Average pay package, Rs./Year			
Students opted for Higher Studies			
Accreditation status of the course			
Doctoral Courses			
Foreign Collaborations, if any			
Professional Society Memberships			
Professional activities			

11. TEACHING STAFF DETAILS

A. MECHANICAL ENGINEERING

SL NO	NAME	DESIGNATION	QUALIFICATION
1	ABDUL SAMAD ABUBUCKER PANAYAMPILLY	ASSOCIATE PROFESSOR	M TECH
2	I.M.CHANDRAN ILLATHMEETHAL	ASSOCIATE PROFESSOR	M.TECH (IE) B. TECH (MECH ENGG)
3	MAHIPAL DIVAKARAN	ASSOCIATE PROFESSOR	M TECH
4	MANESH K K	ASSOCIATE PROFESSOR	M TECH
5	PRAMOD KESAVAN VALIYAKALLUMKAL	ASSOCIATE PROFESSOR	M TECH
6	RAJEEV VAMADEVAN	ASSOCIATE PROFESSOR	MTECH, PHD
7	RAMACHANDRAN K K	ASSOCIATE PROFESSOR	M.TECH.
8	SOMAN AR	ASSOCIATE PROFESSOR	MTECH
9	SUNIL KUMAR SUNIL CHEERATH PUTHANVEEDU	ASSOCIATE PROFESSOR	M TECH, MBA
10	AMBILIKUMAR KOCHURAMAN CHUNDELAPARAMBIL	ASST PROFESSOR	M.TECH
11	ANEZ HYDARI PITCHAKANNU KADERSHAH	ASST PROFESSOR	M.PHIL
12	ANWAR SADIQUE	ASST PROFESSOR	MTECH

13	ARUN SUBRAMANIAN MADATHIPARAMBIL	ASST PROFESSOR	M TECH
14	BALAKRISHNAN K	ASST PROFESSOR	M TECH
15	BINDHU DHARMAJAN NMULLUVATHUKKAL	ASST PROFESSOR	M.TECH
16	JAYEE VARGHESE K	ASST PROFESSOR	M TECH
17	JIBI K K	ASST PROFESSOR	MTECH
18	JOSE AUGSTIN	ASST PROFESSOR	M TECH
19	LALU PAILY PULLOKARAN	ASST PROFESSOR	M TECH
20	MANMOHAN C M	ASST PROFESSOR	M TECH
21	MANOJ JOSE PULIKKOTTIL	ASST PROFESSOR	MTECH
22	MUBARAK KUNJOMOIDEEN AYKKARA	ASST PROFESSOR	M TECH
23	PAUL CHACKO KUTTICHIRAYIL	ASST PROFESSOR	B.TECH
24	PRADEEP M KAMATH	ASST PROFESSOR	M.TECH
25	RAHUL K R	ASST PROFESSOR	BTECH
26	RAJESH VANCHIPURA	ASST PROFESSOR	MTECH, PGDM
27	REKHA L	ASST PROFESSOR	MECHANICAL ENGINEERING
28	SAJITH C SUBRAMANIAN	ASST PROFESSOR	MTECH
29	SANDHYA M	ASST PROFESSOR	M TECH
30	SUDHEESH SAROJINI RAVEENDRAN NAIR	ASST PROFESSOR	M E B.TECH
31	SUNIL JEROME	ASST PROFESSOR	MTECH
32	SUNIL ABDUL SATHAR	ASST PROFESSOR	MTECH
33	TENNISON. K. JOSE KUZHIYAMPARAYIL JOSE	ASST PROFESSOR	B TECH BSC MATHEMATICS
34	ANTONY PAUL VAZHAPIILLY	INSTRUCTOR(TEACHING STAFF)	B TECH
35	MOHANDAS V P	PROFESSOR	MTECH
36	VENUGOPAL G	PROFESSOR	MTECH, MBA
37	RAMESH A	ASSOCIATE PROFESSOR	MTECH, PHD
38	SURESHKUMAR K.K	LECTURER	BTECH
39	LIJO CHUMMAR	INSTRUCTOR	BTECH, DIPLOMA
40	ANIL KUMAR M A	TRADE INSTRUCTOR GR I	
41	ANOOP K P	TRADES MAN	
42	ANTONY E J		
43	ARUN KUMAR K.A	TRADE INSTRUCTOR GR.I	
44	BABU A K		
45	BABU P J		
46	BABU Raman KUTTIKATTU PARAMBIL		
47	BABURAJ V.S	TRADESMAN	

48	BIJUMON VANNARATH	TRADE INSTRUCTOR	
49	DAVOOD T H BAIKE		
50	HANEEFA K A		
51	IQBAL V C		
52	JACOB KUNJUMON MALIAKKAL M J		
53	JAYACHANDRAN C K	TRADE INSTRUCTOR	
54	JOSE Joseph THRISSOKARAN		
55	JOSEPH Peter KONNOTH		
56	JOSEPH George MADAMAKKAL		
57	KANNAN P S	Trade Instructor	
58	LEKHA T	TRADE INSTRUCTOR	
59	MANGALANAND L K		
60	MARAKKARKUNJU P A		
61	MARTIN P V PALATTY HOUSE		
62	MOHANADAS P	Trade Instructor	
63	MUHAMMED Abdul BASITHA		
64	MUHAMMED ABDUL BASITHA	TRADE INSTRUCTOR	
65	NADESAN P.K	TRADE INSTRUCTOR	
66	NARENDRANATH P	TRADE INSTRUCTORE	
67	NIJALAL Narayanan MULLATHARA		
68	PAULY M A		
69	PEETHAMBARAN C T	TRADE INSTRUCTOR	
70	RATHEESH KUMAR C.C	TRADE INSTRUCTURE	
71	ROBINSON ANTONY	TRADESMAN	
72	SANISH K.S	TRADESMAN	
73	SANU K K		
74	SARIN JOSE C		
75	SHAJEEV P V	WORKSHOP INSTRUCTOR GR.I	
76	SHAJI T A		
77	SHAJIRAJ K V		
78	SHAJU P F	TRADE INSTRUCTOR GR.II	
79	SHINOJ TV	TRADE INSTRUCTOR	
80	SOJAN P O		
81	SUNIL S		
82	SURESH Krishnankutty CHERIYIL		
83	UNNIKRISHNAN K S	Instructor Gr-II	
84	VENUGOPAL R		

B. CIVIL ENGINEERING

SLNO	NAME	DESIGNATION	QUALIFICATION
1	ANILKUMAR PARAYIL SANKARAN	ASSOCIATE PROFESSOR	M.TECH
2	ANITHA PULIKKAL HARIDAS	ASSOCIATE PROFESSOR	M.TECH
3	DINESH KUMAR KANDIYOOR SANKAPPAN	ASSOCIATE PROFESSOR	M.TECH
4	LAL	ASSOCIATE PROFESSOR	M.E

	CHERUKUNNATHU VELAYUDHAN		
5	MEERA VASUDEVAN	ASSOCIATE PROFESSOR	M.TECH
6	REEBA THOMAS	ASSOCIATE PROFESSOR	M.TECH
7	SEENA P	ASSOCIATE PROFESSOR	MTECH
8	SHEELA ALEX	ASSOCIATE PROFESSOR	MTECH
9	SUBAIDA E A	ASSOCIATE PROFESSOR	MTECG
10	SUMAM KOTTEKKAT SURENDRAN	ASSOCIATE PROFESSOR	M.S
11	VARGHESE KALATHIPARAMPIL OUSO	ASSOCIATE PROFESSOR	M.TECH
12	ANISHA A	ASST PROFESSOR	MTECH
13	ARUN SIVAKUMAR	ASST PROFESSOR	M TECH
14	ASHA BAHULAYAN	ASST PROFESSOR	M.TECH
15	BINDU GANGADHARAN PILLAI	ASST PROFESSOR	M.E
16	BINDU ACHATHUPARAMBIL GOPALAKRISHNAN	ASST PROFESSOR	M.TECH
17	MEENA JOHN MALIAKAL	ASST PROFESSOR	MTECH
18	MIJI CHERIAN RAPPAKKARAN	ASST PROFESSOR	M.TECH
19	MINIMOL PIEUS THANIKKAL	ASST PROFESSOR	M.TECH
20	NEERA LALI ANAND	ASST PROFESSOR	M.TECH
21	SEEMA ACHATHUPARAMBIL GOPALAKRISHNAN	ASST PROFESSOR	ME
22	SIVAN PAYATHUPARAMBIL PARAMESWARAN	ASST PROFESSOR	M.E.
23	SMITHA MOHAN KANJIRAPARAMBIL	ASST PROFESSOR	MTECH
24	SOSAMONY KOOTHOOR JOHNY	ASST PROFESSOR	M.TECH
25	SREEDEVI V.M	ASST PROFESSOR	MTECH
26	SUDHA CHULLIPARAMPIL PRABHAKARAN	ASST PROFESSOR	M.TECH
27	SAJIKUMAR NEELAKANTAN	PROFESSOR	M.TECH
28	UNNIKRISHNAN N	PROFESSOR	MTECH
29	VINOD P	PROFESSOR	
30	AKARSH GOPI	ASST PROFESSOR ADHOC	MTECH
31	ARYASREE MADHUKUMAR	ASST PROFESSOR ADHOC	MTECH
32	INDUJA P C	ASST PROFESSOR ADHOC	MTECH
33	SAMEENA KHALID	ASST PROFESSOR ADHOC	MTECH
34	SAVITHA T	ASST PROFESSOR ADHOC	MTECH
35	SHERJAH P YUSUF ALI	ASST PROFESSOR ADHOC	MTECH
36	BARATH BHUVANAN	LECTURER ADHOC	MSC
37	REJO MONCY P	LECTURER ADHOC	ME
38	SHOY T S	LECTURER ADHOC	MTECH
39	GEORGE THOMAS KOOTUNGAL THOMAS		
40	RAVIKUMAR THAZHEKKATTU BALAN		
41	CHANDRAJITH CHANDRASHEKAR	TRADESMAN	
42	DIVYA CHAMAPPARAMBIL PEETHAMBARAN	TRADESMAN	
43	GANGADHARAN KUNNUMEL VELAPPAN		
44	GOPALAN EDASSERYVALAPPIL KRISHNAN	DRAUGHTSMAN IN CIVIL ENGINEERING	
45	JAYACHANDRAN VELAYUDHAN	TRADE INSTRUCTOR-GR2	
46	KRISHNAN PALLIVALAPPIL SANKARAN		
47	PREJISHA P V		

48	SASSENDRAN KUNJUMOM	DEMONSTRATOR	
49	SEBASTIAN VELIYATH ULAHANNAN		
50	SINDHU THEKKUT KRISHNAN		
51	SIVARAMAN R		
52	SUNILA KUMARI PAYATHUPARAMBIL VELAYUDHAN		
53	SUNNY KARUMATHY VAREED		
54	VINODH CHATHEN	TRADESMAN	

C. ELECTRICAL AND ELECTRONICS ENGINEERING

SLNO	NAME	DESIGNATION	QUALIFICATION
1	JASMIN EA	ASSOCIATE PROFESSOR	PHD, MTECH
2	PRAMELAKUMARI KRISHNAN	ASSOCIATE PROFESSOR	MTECH
3	PREETHA P	ASSOCIATE PROFESSOR	MTECH
4	REJI PADMAVATHY	ASSOCIATE PROFESSOR	PHD, MTECH
5	BINDUMOL E K	ASST PROFESSOR	MTECH
6	BINITHA JOSEPH MAMPILLY	ASST PROFESSOR	MTECH
7	BINOY B B	ASST PROFESSOR	MTECH
8	CHANDRA BOSE KN	ASST PROFESSOR	MTECH
9	HARYHAR BA S	ASST PROFESSOR	NIL
10	JAISON MATHEW	ASST PROFESSOR	PHD, MTECH
11	JAYASOORYA J	ASST PROFESSOR	MTECH
12	JIJI K S	ASST PROFESSOR	PHD, MTECH
13	JOSE SEBASTIAN	ASST PROFESSOR	M TECH
14	JOSEPH KD	ASST PROFESSOR	MTECH
15	LALGY GOPI	ASST PROFESSOR	MTECH
16	LALY MJ	ASST PROFESSOR	MTECH
17	LISY E R	ASST PROFESSOR	MTECH
18	MANJU B	ASST PROFESSOR	MTECH
19	MINI V	ASST PROFESSOR	MTECH
20	NISHA G POOTHULLIL	ASST PROFESSOR	MTECH
21	RAMESHKUMAR P	ASST PROFESSOR	PHD, MTECH
22	SAJITHA M	ASST PROFESSOR	BTECH
23	SANISH KUMAR.TG	ASST PROFESSOR	MTECH
24	SUBADHRA PR	ASST PROFESSOR	MTECH
25	SUHARA EM	ASST PROFESSOR	MTECH
26	SUNILA MS	ASST PROFESSOR	MTECH
27	SURESH K DAMODARAN	ASST PROFESSOR	MTECH
28	UMA SYAMKUMAR	ASST PROFESSOR	MTECH
29	JAYANAND BALAKRISHNAN	PROFESSOR	PHD, MTECH
30	NANDAKUMAR M	PROFESSOR	PHD, MTECH
31	MINU MANUEL P	ASST PROFESSOR	MTECH

		ADHOC	
32	ANISHA PADICKAMYALIL THANKAPPAN		
33	DIFIN C ANTONY		
34	DINESH K	TRADESMAN	
35	INDUKUMAR R	TRADE INSTRUCTOR	
36	JAYAPRAKASAN P P	WORKSHOP INSTRUCTOR	
37	JICKSON JOSEPH		
38	LALITHA K S	IST GRADE INSTRUCTOR	
39	LATHIKA T R	TRADESMAN	
40	NAZAR PK	TRADESMAN	
41	PAULSON A. V.		
42	PAVITHRAN SR	TRADE INSTRUCTOR	
43	RAJESH KURUVADATH BALAN		
44	RIYA ALOYSIUS		
45	ROY REGHUNATH	TRADESMAN	
46	SADANANTHAN KG	TRADE INSTRUCTOR	
47	SAJITH TV	TRADE INSTRUCTOR	
48	SASEENDRAN K K		
49	SASI KIZHAKKE VEED KUTTAPPAN		
50	SHIBU K P	TRADESMAN	
51	SREEJITH P B	TRADESMAN	
52	SUBHASH C R		
53	VARGHESE CHERUVATHUR	TRADESMAN	
54	VARGHESE CV	TI	
55	VINOD KUMAR PV	TRADESMAN	

#### D. CHEMICAL ENGINEERING

SLNO	NAME	DESIGNATION	QUALIFICATION
1	RAYAMMARAKKAR ABDUL JAMAL	ASSOCIATE PROFESSOR	MSC, M TECH
2	SANTHAKUMARI MURUKUMTHARA SANKARAN	ASSOCIATE PROFESSOR	MSC
3	TRESA GERRARD MAJELLA VANCHIPURAKKAL LOUIS	ASSOCIATE PROFESSOR	MSC
4	AJEESH KIZHAKKEVEEDU NARAYANAN	ASST PROFESSOR	MTECH
5	ANJANA RAMACHANDRAN	ASST PROFESSOR	PHD, MTECH
6	BINDU T K	ASST PROFESSOR	PHD, MSC, NET
7	FASNABI PUTHENKATTIL ABDUKUNJI	ASST PROFESSOR	PHD, MTECH
8	GOPAKUMAR B	ASST PROFESSOR	M.SC MATHEMATICS, B.ED
9	HASEENA POTHYIL VEERAVU	ASST PROFESSOR	MTECH



10	INDIRA ITHIKKAT THAMU	ASST PROFESSOR	MSC, MPHIL,NET,B.ED
11	MANJU MS	ASST PROFESSOR	PHD, MTECH
12	MANOJ NARAYANAN	ASST PROFESSOR	M.TECH
13	MERCY ANNA PHILIP	ASST PROFESSOR	PHD, MTECH
14	RAJAN MANANGOTTU PARAYIL	ASST PROFESSOR	M.SC MATHEMATICS
15	RAJESH P M	ASST PROFESSOR	MSC, UGC-JRF,NET
16	SACHITHRA K	ASST PROFESSOR	MTECH
17	SATHI PANATTIL	ASST PROFESSOR	M.SC MATHEMATICS, B.ED
18	SHAJU KANIMANGALATHU SHANMUGAN	ASST PROFESSOR	PHD, MSC, MPHIL, MTECH,B.ED,NET
19	SHERRY SEBASTIAN	ASST PROFESSOR	MSC, NET
20	SOURABH SAHADEV	ASST PROFESSOR	M. TECH.
21	SUBIN POULOSE	ASST PROFESSOR	MTECH
22	VINOD PALAYOOR RAPHAEL	ASST PROFESSOR	PHD, MSC, NET,M.PHIL,B.ED
23	VISWANATH NARAYANAN CHULLIPARAMBIL	ASST PROFESSOR	PHD, M.SC MATHEMATICS
24	BEENA P M	LECTURER	MTECH
25	SAJEENA BEEVI BASHEER	LECTURER	MTECH
26	REJINI VADAKKEKKARA ONCHY	PROFESSOR	PHD, MTECH
27	SOLOMAN ANTONY POOPANA	PROFESSOR	PHD, MTECH
28	RANJANA R	ASST PROFESSOR	MTECH
29	AUGUSTINE PINHEIRO		
30	BEENA PARAPARAMBATH MAMMUKUTTY	I GRADE INSTRUCTOR	
31	JALAJA R	WORKSHOP INSTRUCTOR	
32	JINEESH. VC		
33	KRISHNAN PALLIVALAPPIL SANKARAN		
34	RAJEESH P	TRADE INSTRUCTOR GR II	
35	RATHEESH KUMAR CHORAMPILLY CHANDRASEKHARAN		
36	SAJEEV I.V.	TRADE INSTRUCTOR	
37	SHIJI JOSEPH		
38	SREEYESH KS	TRADESMAN	

E. ELECTRONICS & COMMUNICATION ENGINEERING

SLNO	NAME	DESIGNATION	QUALIFICATION
1	ANILKUMARB C D	ASSOCIATE PROFESSOR	
2	MUNEERA C.R.	ASSOCIATE PROFESSOR	MTECH
3	JOB CHUNKATH	ASST PROFESSOR	M.TECH
4	LATHA K.N	ASST PROFESSOR	M.TECH.

5	MANOJ K.	ASST PROFESSOR	PHD
6	NELSON K.J	ASST PROFESSOR	MTECH
7	PREMANAND B	ASST PROFESSOR	M TECH
8	PURUSHOTHAMAN K.G	ASST PROFESSOR	MTECH
9	ROY FRANCIS ALAPPAT	ASST PROFESSOR	MTECH
10	SINDHU N	ASST PROFESSOR	M TECH
11	MRINALINI C P	PROFESSOR	MTECH
12	ASHA J	ASST PROFESSOR	ME
13	THAJUDIN AHAMED V I	PROFESSOR	PHD, M.TECH
14	ANISH BABU KALLARAKKAL KAMARUDHEEN	ASST PROFESSOR	MTECH
15	MOHANAN K P	ASST PROFESSOR	PG
16	MUHAMMED ASHRAF N	ASST PROFESSOR ADHOC	BTECH
17	ASSANC	TRADESMAN	
18	ASSAN.C.	TRADESMAN	
19	BABYMC	TRADE INSTRUCTOR	
20	GODWINRODRIGUES	TRADE INSTRUCTOR	
21	JAINYPAUL	TRADESMAN	
22	JOJOANTONYVADUKKOOTT	FIRST GRADE INSTRUCTOR	
23	MANIKANDANK	TRADE INSTRUCTOR	
24	SHINCYTP	TRADESMAN	
25	SINDHUP.	TRADESMAN	
26	UNNIKRISHNANP	TRADE INSTRUCTOR	
27	VALSALAKK	TRADE INSTRUCTOR	
28	MURALEEDHARANP.S.	WORKSHOP INSTRUCTOR	

F. PRODUCTION

SLNO	NAME	DESIGNATION	QUALIFICATION
1	JAYASREE N	ASSOCIATE PROFESSOR	MTECH
2	PARAMESWARAN MOOTHEATH	ASSOCIATE PROFESSOR	MTECH PGDGAC
3	SHALIJ P R POOVETHUM KADAVIL	ASSOCIATE PROFESSOR	PDH, MTECH PGDFM(IGNOU)
4	ANIL RAJAGOPAL K P	ASST PROFESSOR	MTECH
5	ARUN CHANDRAN	ASST PROFESSOR	ME
6	BOBY K GEORGE	ASST PROFESSOR	PHD, MTECH MBA
7	HARIS NADUTHODI	ASST PROFESSOR	PHD, MTECH MBA

8	MANJITH KUMAR B	ASST PROFESSOR	PHD, MTECH
9	SUJATHA INDIRA	ASST PROFESSOR	MTECH
10	SUNIL D.T	ASST PROFESSOR	MTECH
11	UMARALI KALATHINGAL	ASST PROFESSOR	MTECH
12	GOPINADHAN P.V	PROFESSOR	MTECH
13	MARY C . KURIAN	PROFESSOR	MTECH
14	SATISH PARASURAMAN KIZHAKEMADOM	PROFESSOR	MBA
15	CHANDRANVV	TRADE INSTRUCTOR	
16	DEVASSY CHIRAYATH THOMAS		
17	JAYA KUMAR M		
18	KITTUKANDAN		
19	PAUL VV		
20	SAJEE VP	TRADE INSTRUCTOR	
21	SATHOSH KUMARK. GOPALAKRISHNAN		
22	SIJIMON KP	TRADE INSTRUCTOR	
23	ANTONY VARTHESE VITHAYATHIL	TRADE INSTRUCTOR	

G. COMPUTER SCIENCE AND ENGINEERING

SLNO	NAME	DESIGNATION	QUALIFICATION
1	SMINESH C.N.	ASSOCIATE PROFESSOR	ME
2	SWARAJ K P	ASST PROFESSOR	ME
3	VIPIN KUMAR KOTTIARA STHIAVAN	ASST PROFESSOR	MTECH
4	RAHAMATHULLA K	ASST PROFESSOR	MTECH
5	HELEN K J	ASSOCIATE PROFESSOR	M.TECH
6	AJAY JAMES	ASST PROFESSOR	M TECH
7	BISNA N D	ASST PROFESSOR	MTECH
8	JAYASREE M	ASST PROFESSOR	M.TECH
9	MANOJ KUMAR K V	PROFESSOR	M E
10	CINU SKARIA	ASST PROFESSOR ADHOC	MTECH
11	DEEPTHY K BHASKAR	ASST PROFESSOR ADHOC	ME
12	JOBY N J	ASST PROFESSOR ADHOC	M.TECH
13	SAJEENA SHAJI	ASST PROFESSOR ADHOC	
14	UMASREE AK	ASST PROFESSOR ADHOC	MTECH
15	RENNY P VARGHESE	TRADESMAN	
16	ANILKUMAR TP	TRADESMAN	
17	SINDHU HK	TRADE INSTRUCTOR	
18	MARY SHEELA E I	TRADE INSTRUCTOR	
19	PREMKUMAR M P	COMPUTER PROGRAMMER	
20	SREEJITH PP	TRADESMAN	
21	ABDUL JALEEL P.M.	TI	
22	ELVIS DK	TI	
23	LALY MG		
24	PRASANTH D	TI	
25	SATHYAN K. R.	TM	

26	SHIBU KP		
27	VINOD K.J.	TM	

#### H. ARCHITECTURE

SLNO	NAME	DESIGNATION	QUALIFICATION
1	JOSNA RAPHAEL P	ASSOCIATE PROFESSOR	PHD, M.ARCH
2	BIJU CHEMMANOR APPUNNY	ASST PROFESSOR	M.PLAN
3	BINDU CHEMMANOR APPUNNY	ASST PROFESSOR	M.PLAN, MSW,PGDPC
4	GEETHA AMMINI	ASST PROFESSOR	M.PLAN
5	JENCY P A	ASST PROFESSOR	B.ARCH
6	LAKSHMI S R	ASST PROFESSOR	MPLAN
7	REKHA VIJAYAKUMAR	ASST PROFESSOR	MARCH
8	RESHMA M	ASST PROFESSOR	MPLAN
9	SUJITH M	ASST PROFESSOR	
10	SURYA SARASAMMA	ASST PROFESSOR	B.ARCH
11	AJAYAKUMAR VASUMATHI SAHADEVAN	LECTURER	B F A
12	RANJINI BHATTATHIRIPAD	PROFESSOR	M.ARCH
13	SREELAKSHMI C J	ASST PROFESSOR ADHOC	MPLAN
14	APARNA S	LECTURER ADHOC	M.ARCH ( URBAN DESIGN)
15	DEVIKA K C	LECTURER ADHOC	M. PLAN (URBAN PLANNING)
16	JOSEPH JOSEPH CHALISSERY	LECTURER ADHOC	M.ARCH ( URBAN DESIGN)
17	ANUSHKA NUZRIN	INSTRUCTOR	
18	RAJANI K	SECOND GRADE DRAFTSMAN	
19	SURESHKUMAR SACHIDANADA004E		

#### I. MCA

SLNO	NAME	DESIGNATION	QUALIFICATION
1	REENA P	PROFESSOR & HEAD	M TECH COMPUTER SCIENCE & ENGINEERING
2	ALI M. A	ASSO.PROFESSOR	M TECH COMMUNICATIONS ENGINEERING
3	SOUMIA CHANDRAN	ASST.PROFESSOR	BTECH COMPUTER SCIENCE & ENGINEERING
4	SASIKUMAR M N	COMPUTER PROGRAMMER	
5	SREEJITH P P	TRADESMAN	
6	HREDYA SUNDARAN	ASST PROFESSOR ADHOC	MCA
7	KRISHNAPRIYA K V	ASST PROFESSOR ADHOC	ME
8	NIDHIN A S	ASST PROFESSOR ADHOC	MCA,MPHIL,ME
9	SHERON VACKACHAN	ASST PROFESSOR ADHOC	MCA

#### J. Department of Mathematics and Science

SLNO	NAME	DESIGNATION	QUALIFICATION
1	DR. SHEEBA M.B	ASSOCIATE PROFESSOR AND HOD	PH.D
2	MR. B. GOPAKUMAR	ASSISTANT PROFESSOR	M.SC., B.ED.
3	DR. VISWANATH C. NARAYANAN	ASSISTANT PROFESSOR	M.SC, PH.D
4	MR. M. P. RAJAN	ASSISTANT PROFESSOR	
5	MS. SINDU MATHEW P.	ASSISTANT PROFESSOR	M.SC.
6	DR. SEEMA VARGHESE	ASSISTANT PROFESSOR	M.SC., PH.D
7	MS. SATHI P.H.	ASSISTANT PROFESSOR	M.SC., B.ED.
8	DR. SAJEEV S. NAIR	ASSISTANT PROFESSOR	
9	JINSMOL JANARDANAN	ASST PROFESSOR	
10	PADMAJA K	ASST PROFESSOR	MSC, B.ED

K. Department of PHYSICS

SLNO	NAME	DESIGNATION	QUALIFICATION
1	R.A. ABDUL JAMAL	ASSOCIATE PROFESSOR AND HOD	M.SC., M.TECH
2	VASANTHAKUMAR E.G	ASSISTANT PROFESSOR	M.SC.,NET
3	JESTIN M.G	ASSISTANT PROFESSOR	M.SC.,B.ED.,NET
4	RAJESH P.M	ASSISTANT PROFESSOR	M.SC.,NET
5	PRASANTH P	ASSISTANT PROFESSOR	M.SC.,B.ED.,NET
6	DR. MANOJ R.	ASSISTANT PROFESSOR	M.SC., PHD
7	P. D. ANTHONY	NON TECHNICAL ATTENDER	
	RAGHU O	ASST. PROFESSOR	
	REKHA NAIR K.	ASST. PROFESSOR ADHOC	

L. Department of CHEMISTRY

SLNO	NAME	DESIGNATION	QUALIFICATION
1	TRESA GERARD MAJELA V. L.	ASSOCIATE PROFESSOR & HEAD	M.SC.
2	DR. SHAJU K. S.	ASSISTANT PROFESSOR	PHD., M.SC, MPHIL, NET, M.TECH (INDUSTRIAL CATALYSIS)
3	INDIRA I T.	ASSISTANT PROFESSOR	M.SC., M.PHIL, NET
4	DR. VINOD P. RAPHAEL	ASSISTANT PROFESSOR	PHD., M.SC., M.PHIL., SET, NET
5	SHERRY SEBASTIAN	ASSISTANT PROFESSOR	M.SC., NET
6	UMADEVI T. U.	ASSISTANT PROFESSOR	M.SC., M.PHIL., NET
7	VINODKUMAR I.	NON-TECHNICAL ATTENDER	
8	ANTONY C K	NON TECHNICAL ATTENDER	
	BINDHU T K	ASSISTANT PROFESSOR	

M. DEPARTMENT OF ECONOMICS

<b>SLNO</b>	<b>NAME</b>	<b>DESIGNATION</b>	<b>QUALIFICATION</b>
1	RAJESH P	ASSISTANT PROFESSOR	

N. DEPARTMENT OF PHYSICAL EDUCATION

<b>SLNO</b>	<b>NAME</b>	<b>DESIGNATION</b>	<b>QUALIFICATION</b>
1	PROF. SEEJA V.V	ASSISTANT PROFESSOR	MPE,NET
2	PROF. SHEJIN K. V.	ASSISTANT PROFESSOR	MPE, NET
3	MR. RAMACHANDREN	MARKER	